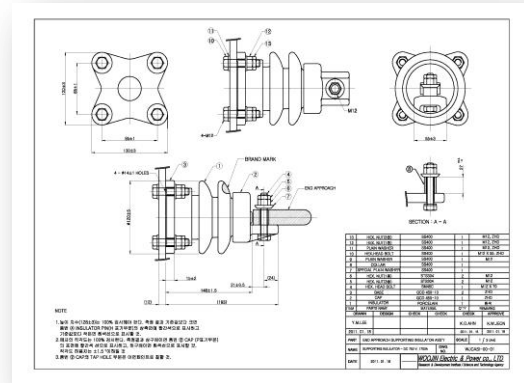


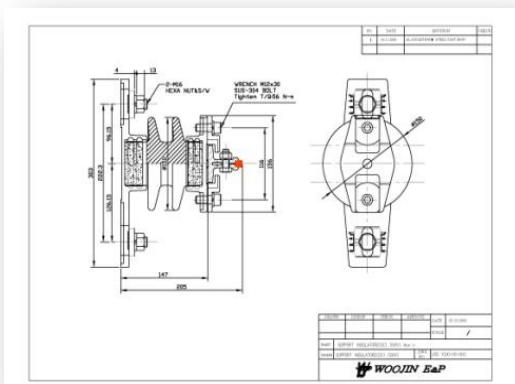
[D.C 750V K-AGT Type]

Standard / Expansion Joint / Anchoring Device

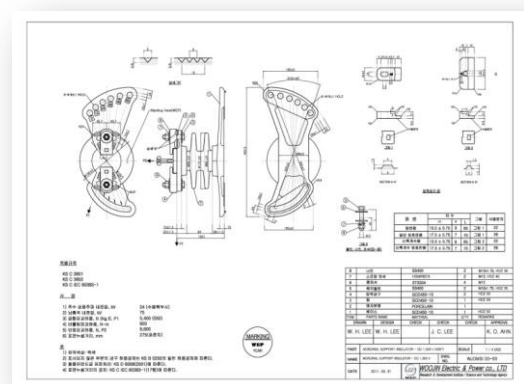


[D.C 750V K-AGT Type]

End Approach



[D.C 1500V Magnetic Levitation Train Type]



[D.C 1500V Monorail Type]

For Daegu Urban Railway Line No. 3

Test item	For D.C 1,500V				For D.C 750V			
					Busan urban railway Line No.4			
	Daegu urban railway line	Middle east	Magnetic levitation train	For overseas	Standard	Expansion Joint	Anchoring Device	End Approach
Creepage distance	275mm	255mm	275mm	203mm	-	-	-	-
Low-frequency Dry withstand voltage	-	-	45kV/1min.	40kV/1min.	30kV/2min.	30kV/2min	30kV/2min.	30kV/2min.
Low-frequency Wet withstand voltage	24kV/1min.	24kV/1min.	24kV/1min.	-	15kV/1min.	15kV/1min	15kV/1min.	20kV/1min.
Lightning impulse withstand voltage	75kV	75kV	75kV	50kV	50kV	50kV	50kV	50kV
Bending failing [proof] load	5,400N	6,000N	6,000N	6,000N	(250kgf/1min.)	(250kgf/1min.)	(600kgf/1min.)	Min. 600kgf
Tensile mechanical failing (proof) load	9,800N	10,000N	10,000N	4,900N/1min.	(1,000kgf/1min.)	(1,000kgf/1min.)	(1,000kgf/1min.)	Min. 1,700kgf
Torsional Failing load	600N-m	600N-m	600N-m	-	-	-	-	-
Thermal shock	70°C diff, 22min./3tim	70°C diff, 15min./3ti	70°C diff, 15min./3ti	70°C diff, 15min./3ti	90°C diff, 15min./3tim	90°C diff, 15min./3ti	90°C diff, 15min./3tim	70°C diff, 15min./3time
Porosity	9.8MPa/4hours	100kgf/4hours	153kgf/12hours	153kgf/12hours	100kgf/4hours	100kgf/4hours	100kgf/4hours	100kgf/4hours
Galvanizing	350g/m ² (48.6μm)	350g/m ² (48.6μm)	500g/m ² (70μm)	350g/m ² (48.6μm)	350g/m ² (48.6μm)	350g/m ² (48.6μm)	350g/m ² (48.6μm)	350g/m ² (48.6μm)

