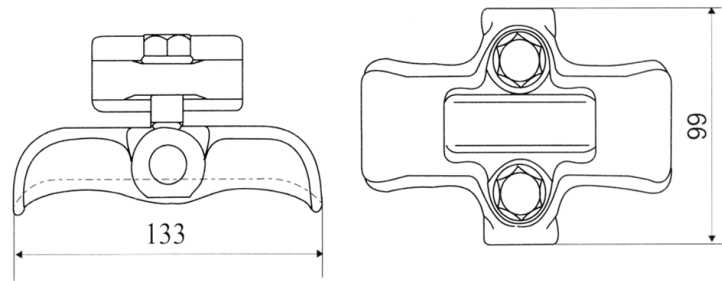




The following top clamps and studs shall be hot dip galvanized if they are made of malleable iron and wrought steel.

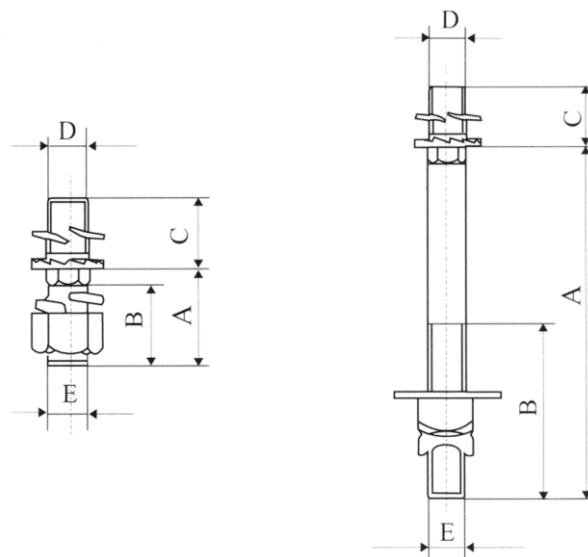
Top Clamp



The top clamps are suitable for ANSI Class 57-11 to 57-15 and 57-21 to 57-25

Catalog Number	Malleable Iron	5711 A1	5711 B1	5711 C1	5711 D1
	Aluminum Alloy	5711 A2	5711 B2	5711 C2	5711 D2
Outside Diameter of Conductor, mm	Max	14.2	21.3	26.9	38.1
	Min	6.35	8.89	12.7	25.4

Line Post Stud



The line post studs are suitable for ANSI Class 57-1 to 57-5 and 57-11 to 57-15 and 57-21 to 57-25.

Catalog Number		5701-2	5701L-1	5706-2	5706-1	5715-1
Kind of Cross arm		Steel	Wood	Steel	Wood	Steel
Dimensions, mm	A	45	178	45	178	45
	B	37	89	37	89	37
	C	31	31	31	31	31
	D	M20	M20	M20	M20	M20
	E	M16	M16	M20	M20	M20

