



Deadend & Suspension Polymer Insulators for 15kV, 25kV and 35kV Application



WOOJIN Electric & Power Co., LTD.

Research & Development Institute/Science and Technology Agency

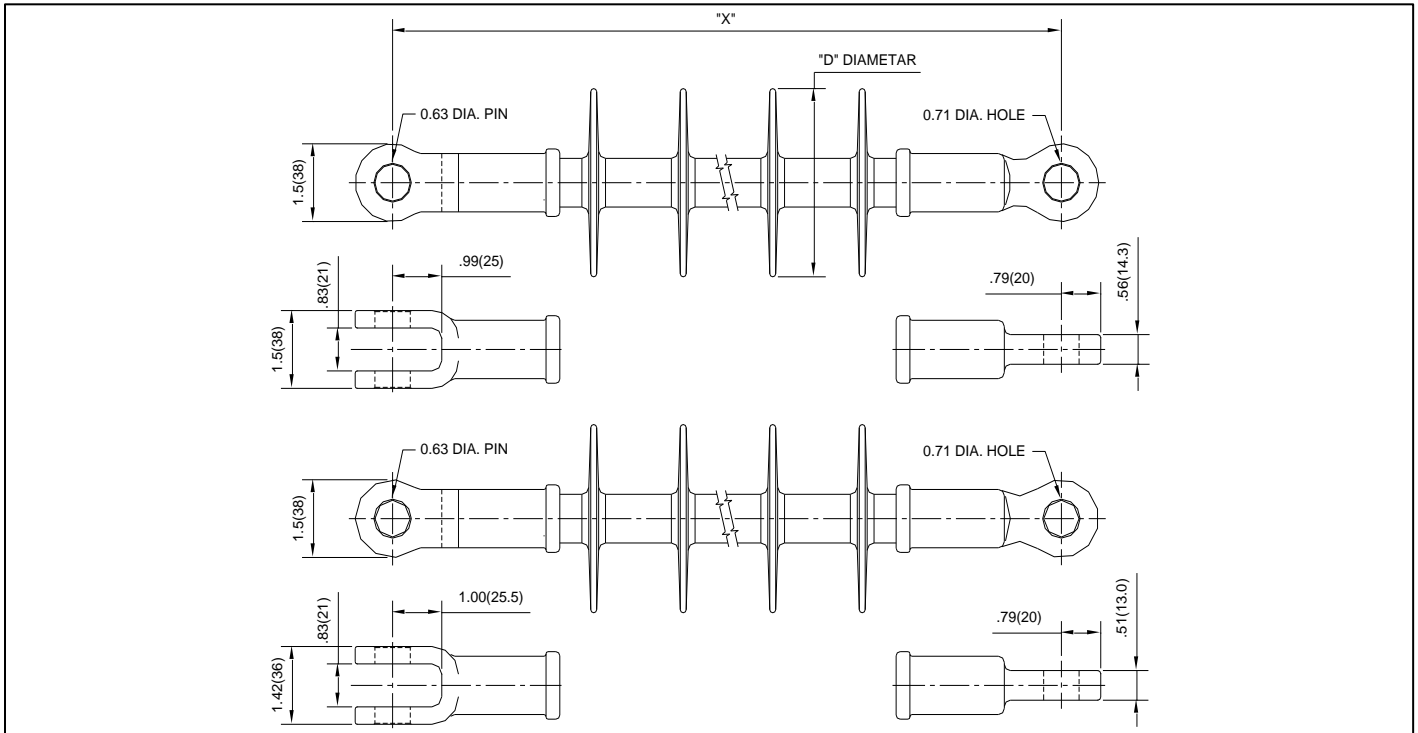
1B-1L, National 4th Industrial Complex, Sindang, Sandong, Gumi, Gyeongbuk, Korea 730-853
www.woojinenp.com

TEL (82)54-476-0013~16, FAX (82)54-476-0017

Deadend & Suspension Insulators



Mechanical & Electrical characteristics



Catalog Numbers	Line Voltage (kV)	"X" Section Length Inches(mm)	"D" Shed Diameter Inches(mm)	No. of Sheds	Leakage Distance Inches(mm)	Dry Arc Distance Inches(mm)	¹ SML pounds (kN)	² RTL pounds (kN)	Torsion ft-lb (N-m)
WEPA7-0459-AGH	15	13.66(347)	3.82(97)	4	18.07(459)	8.58(218)	15,000 (70)	7,500 (35)	40(55)
WEPA7-0411-BCE		12.95(329)	3.62(92)		16.18(411)	8.00(203)			35(47)
WEPB7-0693-AGH	25	17.24(438)	3.82(97)	6	27.28(693)	12.36(314)			40(55)
WEPB7-0625-BCE		17.01(432)	3.62(92)		24.61(625)	12.25(311)			35(47)
WEPC7-0927-AGH	35	21.10(536)	3.82(97)	8	36.50(927)	16.14(410)			40(55)
WEPC7-0850-BCE		20.04(509)	3.62(92)		33.46(850)	15.25(387)			35(47)
Catalog Numbers	Insulator Class	Flashover ANSI		Critical Flashover ANSI		RIV		Power Arc kA-cycles	Net Wt. Pound (kg)
		Dry(kV)	Wet(kV)	Pos(kV)	Neg(kV)	Test(kV)	Max.(μV)		
WEPA7-0459-AGH	DS - 15	110	73	140	155	15	<10	150	2.50(1.13)
WEPA7-0411-BCE	15	90	65	130	150				2.65(1.2)
WEPB7-0693-AGH	DS - 28	149	110	250	265	20			2.80(1.27)
WEPB7-0625-BCE	28	130	110	190	230				2.98(1.35)
WEPC7-0927-AGH	DS - 35	184	142	286	300	30			3.30(1.50)
WEPC7-0850-BCE	35	145	130	250	275				3.28(1.49)

¹SML - Specified Mechanical Load is the tension load that a DTR insulator can withstand during 90 second test without failures.

²RTL - A Routine Test Load value is equal to 50% of the SML value.

Catalog Numbers System					
W	E	P	A	7	-
				0	8
				3	0
				-	B
				A	B
				1	2
				3	4
				5	6

1 : Voltage Rating A - 15kV, B - 28kV, C - 35kV
 2 : Specified Mechanical Load 7 - 70kN 3 : Leakage Distance(mm)
 4 : Diameter Rod A - 16mm, B - 16.9mm
 5 : Top End Fittings 6 : Bottom End Fittings
 A - Tongue, B - Clevis, C - Socket(ANSI 52-3), D - Socket(IEC 16mm)
 E - Ball(ANSI 52-3), F - Ball(IEC 16mm), G - Tongue(ANSI), H - Clevis(ANSI)