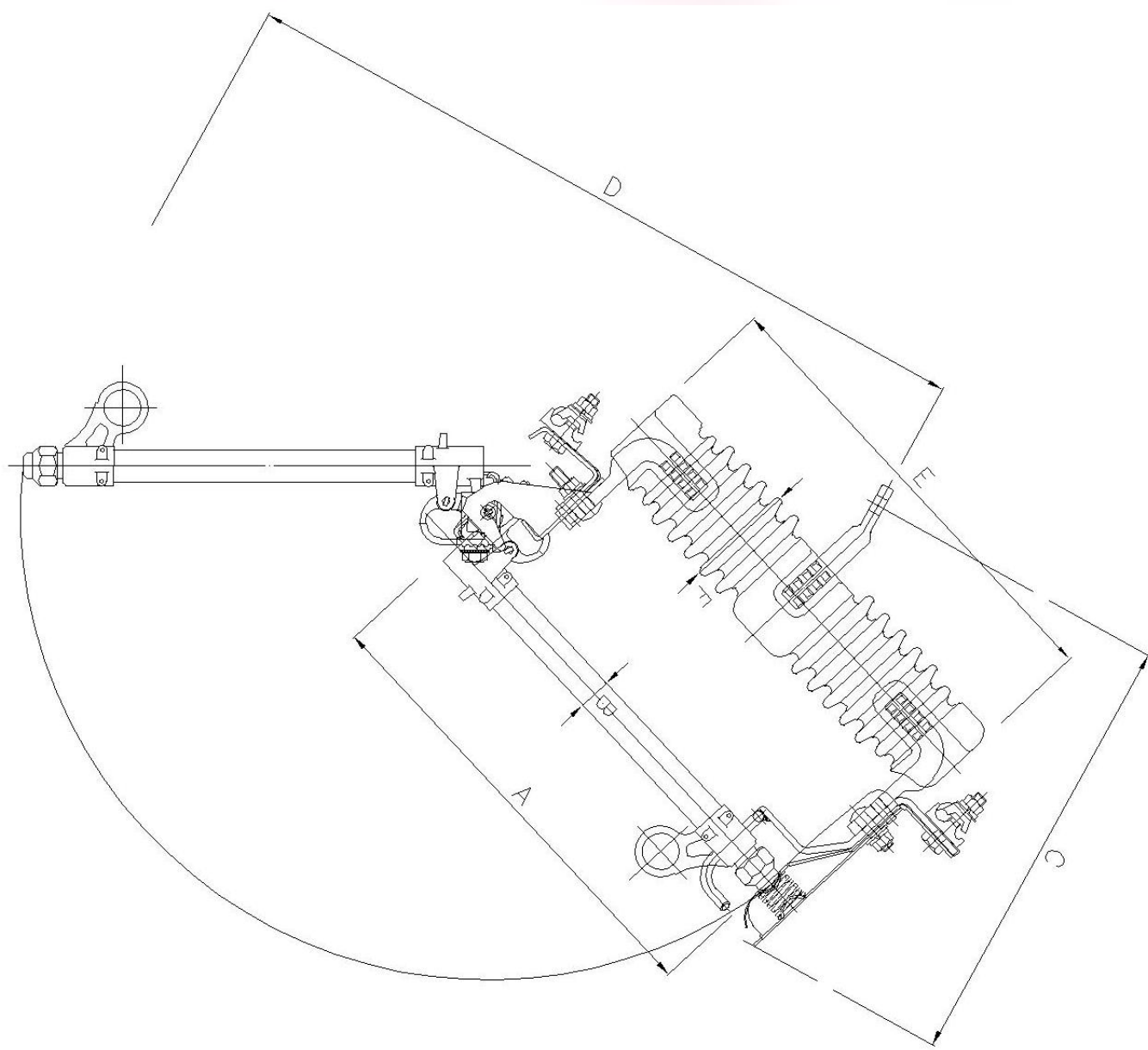


# Polymer Insulator

## (25.8kV Insulator for Cut-Off Switch)

### [Scope]

The polymer cutout switches are using to protect and switch for high voltage transformer.



[Drawing: Polymer COS]



[Porcelain COS]



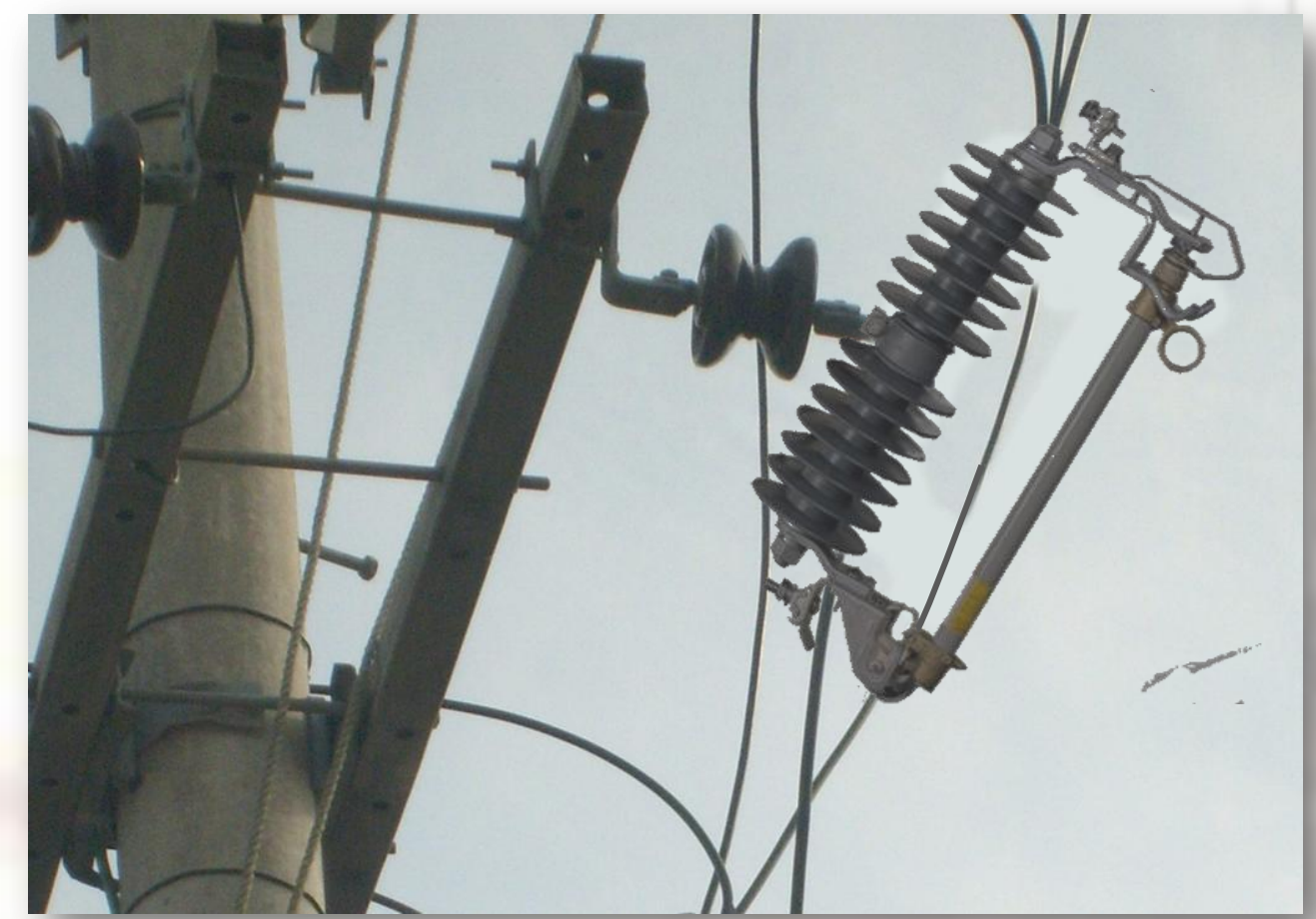
[Polymer COS]

### [Properties]

- Simple structure and easy to use.
- Leading international standards and excellent electrical and mechanical properties.
- Light weight and easy handling, so it makes saving the cost.
- High tensile strength and impact resistance.
- Excellent performance to salt and dust contamination area like island, sea coast and industrial complex.



[Application of porcelain COS]



[Application of polymer COS]

### [Specification]

Type	Test Item	Requirement
Rated	(1) Voltage rating, kV	25.8
	(2) Maximum design voltage, kV	27
	(3) Rated current, A	100
	(4) Rated breaking current	
Insulation Characteristic	a) Asymmetrical RMS, A	10,000
	b) Symmetrical RMS, A	7,100
	(1) Terminal to ground	
	a) Low-frequency Dry withstand voltage, rms kV [60sec]	42
	b) Low-frequency Wet withstand voltage, rms kV [10sec]	36
	c) Critical impulse withstand voltage, kV [1.2 x 50 μs]	125
	(2) Terminal to Terminal	
	a) Low-frequency Dry withstand voltage, rms kV [60sec]	42
b) Critical impulse withstand voltage, kV [1.2 x 50 μs]	125	

